

## Shipping Service Samples for Java

This folder contains sample code for accessing Shipping services via the java Apache Axis2 engine with Apache Rampart security module. Samples are provided for these operations:

- CreateShipment
- GetArtifact (Shipment and Manifest)
- GetShipmentPrice
- VoidShipment
- GetShipment
- GetShipmentDetails
- GetShipmentReceipt
- GetGroups
- GetShipments (Shipment and Manifest)
- TransmitShipments
- GetManifest
- GetManifestDetails
- GetManifests
- GetCustomerInformation
- GetMoboCustomerInformation

### About These Samples

- These samples are meant to accompany the [Developer Program Getting Started Guide](#). They will help you validate that your Developer Program account is set up correctly, and will help you create your first Shipping request.

### Conventions

- **<install\_directory>** - This is the file folder where you have extracted these code samples into. Examples may include: CPCWS\_SOAP\_Java\_Samples; CPCWS\_SOAP\_DotNet\_Samples, or CPCWS\_SOAP\_Tracking\_PHP\_Samples among others.

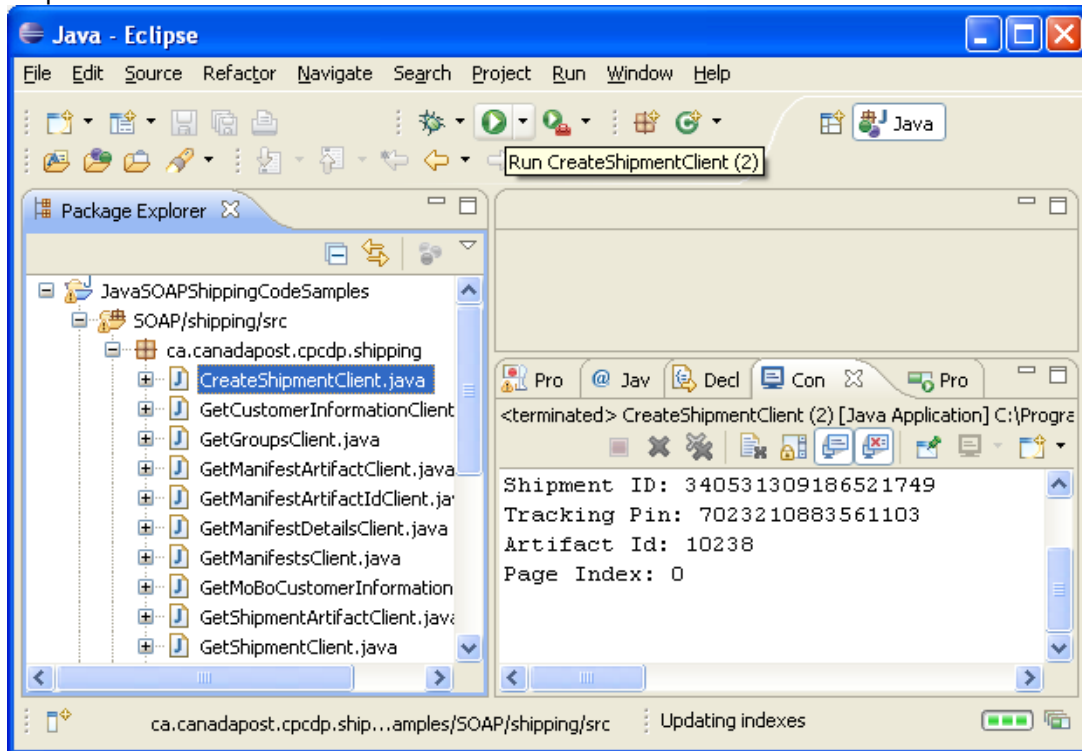
### Prerequisites

- You must have a valid Developer Program account.
- You must be signed up to use Developer Program.
- Requires the Java™ Platform, Standard Edition 6 Development Kit (JDK™6) or newer (for more information, go to <http://www.oracle.com/technetwork/java/javase/downloads/index.html> ). If your version of JDK is older than 6.0, you must install newer version.
  - Follow the instructions on the Sun Java web site to install the JDK
- Also requires Eclipse version 3.6 or newer.
  - Follow the instructions on the Eclipse website to install Eclipse. <http://www.eclipse.org>

### Running the Samples

- 1) Edit **<install\_directory>\user.properties** in the folder of extracted package.
  - a) Update this file with your Developer Program username, password and customer number.
- 2) Import Java Project from extracted samples package.
  - a) From the main menu bar, select **File → Import....** The Import wizard opens.
  - b) Select **General > Existing Project into Workspace** and click **Next**.

- c) Choose **Select root directory** and click the associated **Browse** to locate the directory of the extracted samples and select the **<install\_directory>** directory.
  - d) Under **Projects** select the project or projects which you would like to import.
  - e) Click **Finish** to start the import.
- 3) Select **CreateShipmentClient** java file and Run as Java Application. View the output in the Eclipse console



- 4) Experiment with the other samples.